

BYLAW NO. 02/16

BEING A BYLAW OF FLAGSTAFF COUNTY, IN THE PROVINCE OF ALBERTA, FOR THE PURPOSE OF DESIGNATING PROPERTY AS A MUNICIPAL HISTORIC RESOURCE.

WHEREAS, Pursuant to Section 26 of the Historical Resources Act, RSA 2000, as amended, permits Flagstaff County Council to designate any historic resource within a municipality, whose conservation it considers to be in the public interest, as a Municipal Historic Resource; and

WHEREAS the conservation of the Simpson Barn, located at SE 3-42-12-W4, appears to be in the public interest;

NOW THEREFORE, the Council of Flagstaff County, in regular meeting, duly assembled, hereby enacts as follows:

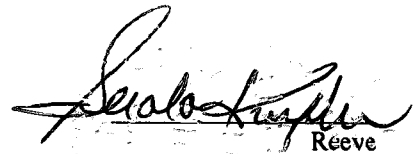
- THAT** 1. This Bylaw shall be cited as the "SIMPSON BARN" Designation Bylaw."
- THAT** 2. The historic resource commonly known as the SIMPSON BARN, together with the land on which it is located, being legally described as SE 3-42-12-W4, is hereby designated as a Municipal Historic Resource.
- THAT** 3. The SIMPSON BARN, and its heritage value, is specifically described in Schedule "A", which is attached to and is a part of this Bylaw.
- THAT** 4. The Municipal Historic Resource hereby designated, shall not be removed, destroyed, disturbed, altered, rehabilitated, repaired, or otherwise permanently affected unless the proposed changes to the property are approved by Flagstaff County before the work proceeds.
- THAT** 5. Alterations proposed to the Municipal Historic Resource hereby designated will be evaluated by Flagstaff County using the *Standards and Guidelines for the Conservation of Historic Places in Canada*. Unapproved alterations that seriously impact the Character Defining Elements of a Municipal Historic Resource may **eliminate access to provincial funding**, and or force the municipal council to reconsider/remove the designated status of the property.
- THAT** 6. This bylaw shall come into force upon third and final reading.

READ a first time this 11 day of May, 2016.

READ a second time this 11 day of May, 2016.

READ a third time this 11 day of May, 2016 and finally **PASSED**

this 11 day of May 2016.


Reeve


Chief Administrative Officer

Simpson Barn

SE 3-42-12-W4



Description of the Historic Place

This unique L shaped barn has an intersecting gambrel roof with wood shingles, flared eaves, a hay hood and three cupolas. A shed roof addition is on the north side. The entire barn is clad in red painted shiplap with contrasting white trim. The vertical plank sliding doors on the front façade have a wood “X” design. This barn is located southeast of Sedgewick in Flagstaff County.

Heritage Value

This barn is significant for its association with the themes of early settlement and agricultural development in Flagstaff County, for its design, and for its association as a local landmark.

In 1910, the CPR initiated the Ready-Made farm initiative to encourage settlement in Flagstaff County. It allocated one hundred quarter sections in Townships 42 and 43, Ranges 11 and 12 to sell to settlers. These “ready-made farms” were planned to have a completed four room house, a barn, a drilled well, and a fenced property with fifty acres of land under cultivation. The farm located at SE 3-42-12-W4 was purchased under the CPR Ready-Made farm initiative by the Percy Simpson family in 1914.

It appears they were doing quite well to have the resources to build and the need for such a large barn.

The L shaped Barn, unique for the area, was constructed in 1924, 10 years after the Percy Simpson family purchased the farm. The Simpson Barn is valued for its gambrel, or two slope gable roof design. The double slope design permits a larger capacity hay loft without increasing the height of the barn's side walls. This type of roof reached the height of its popularity early in the twentieth century. Other design features typical of a gambrel barn include the large hay door on the second floor, the hay hood, the cupolas and the four light windows. The gambrel roof on the Simpson Barn is supported with a brace rafter frame where each set of four rafters is braced at all angles to form a light truss.

The Simpson Barn is significant for its association as a local landmark. Located just east of the junction of Highway 608 and Highway 36, what was known as "Simpsons Corner" because of the stores and services previously located there, the large, red, L shaped barn is clearly visible and noteworthy feature along Provincial Hwy 608.

Character Defining Elements

The character defining elements as expressed in the form, massing, and materials of the barn include:

- The "L" shaped plan
- The fir frame construction
- The intersecting gambrel roof
- The braced frame roof construction
- The wood shingles
- The three cupolas with intersecting gable roofs
- The hay hood
- The wood shiplap siding with contrasting colour corners boards
- The multiple four light windows on the long side of the barn
- The vertical plank doors
- The wood "X" design on doors
- The concrete and fieldstone foundation
- The interior stalls
- The tack hangers
- All authentic windows and doors, and all authentic window and door openings

The character defining elements as expressed in the form, massing, and materials of the 1944 addition include:

- The frame construction
- The shed roof
- The wood shingles
- The wood shiplap siding with contrasting colour corners boards
- The multiple four light windows
- The vertical plank doors

Simpson Barn

Character Defining Elements



- L shaped plan
- Intersecting gambrel roof
- Hay hood
- Flared roof
- Wood shingles
- Sliding hayloft doors with "X" design



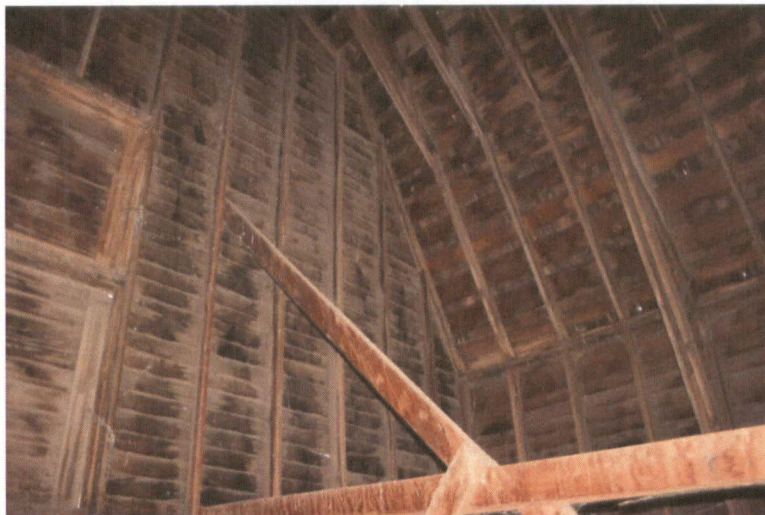
- Vertical plank sliding door
- Contrasting colour wood "X" design
- Red painted shiplap siding
- Four light window



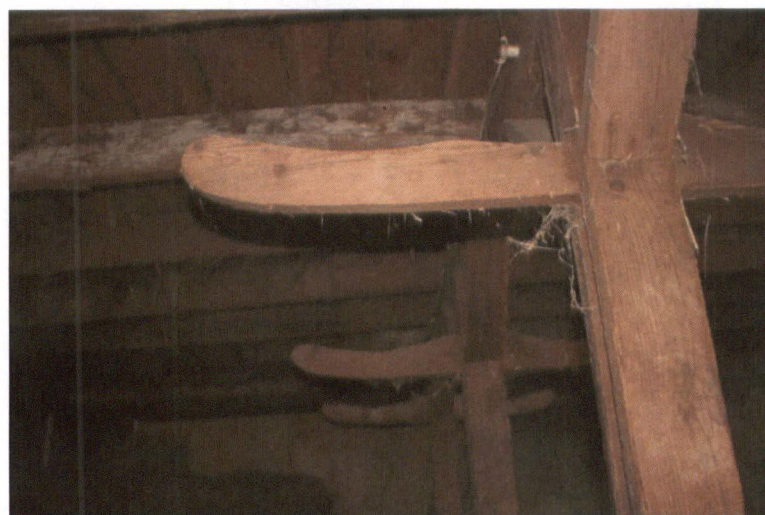
- Multiple windows on the long side of the barn
- Shiplap siding with contrasting colour trim
- 'X' design on doors
- Cupolas



- Concrete and fieldstone foundation
- Shiplap siding
- Contrasting corner board



- Open span hay loft
- Braced rafters
- Frame construction



- Fir support post
- Tack hangers



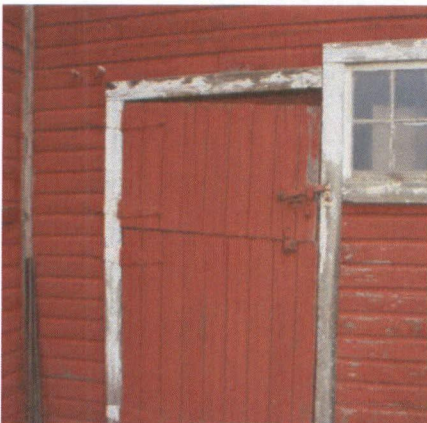
1944 addition

- Shed roof
- Vertical plank doors
- Shiplap
- Corner boards
- Four light windows



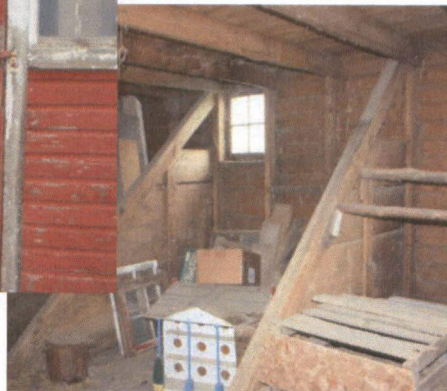
1944 addition

- Shed roof
- Shiplap
- Corner boards
- Evenly spaced four light windows



1944 addition

- Split vertical plank door



1944 addition

- Cattle stalls
- Four light window