

BYLAW 05/15

BEING A BYLAW OF FLAGSTAFF COUNTY, IN THE PROVINCE OF ALBERTA, FOR THE PURPOSE OF AUTHORIZING AN AMENDMENT TO BYLAW 06/12 BEING THE LAND USE BYLAW.

WHEREAS Section 692(1)(f) of the Municipal Government Act, being Chapter M-26 of the Revised Statutes of Alberta 2000, provides that a Municipality may amend a bylaw for a statutory plan;

WHEREAS it is deemed advisable to amend the Land Use Bylaw for the portion of Pt. NE 5-44-12-W4, located North of Highway 13;

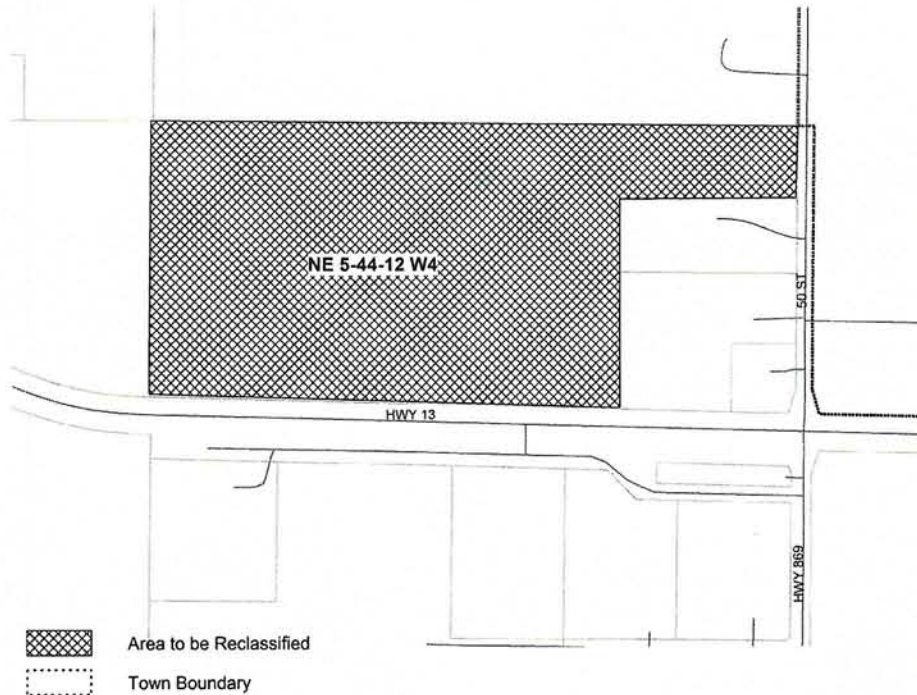
WHEREAS notice of the proposed bylaw was given and a Public Hearing was held on December 11, 2015, commencing at 9:00am, at the Flagstaff County Office;

NOW THEREFORE pursuant to the authority conferred upon it by the *Municipal Government Act*, the Council of Flagstaff County, duly assembled hereby enacts as follows:

THAT Bylaw 06/12 the Land Use Bylaw is amended as follows:

In Schedule B4, Land Use District Map, to reclassify the following location:

All that portion of Pt. NE 5-44-12-W4, located North of Highway 13, and consisting of approximately 55 acres, from the Multi-Lot Country Residential "MCR" Area to the Highway Commercial "HC" Area.



READ A FIRST TIME THIS 25 **DAY OF** November, A.D. 2015,

Seralea Kuyler
Reeve
S. Armstrong
Chief Administrative Officer

READ A SECOND TIME THIS 11 **DAY OF** December, A.D. 2015,

Seralea Kuyler
Reeve
S. Armstrong
Chief Administrative Officer

READ A THIRD TIME AND FINALLY PASSED THIS 11 **DAY OF** December, A.D. 2015,
2015,

Seralea Kuyler
Reeve
S. Armstrong
Chief Administrative Officer